



Vehicle conversion

## WHEELCHAIR ACCESSIBLE VEHICLE

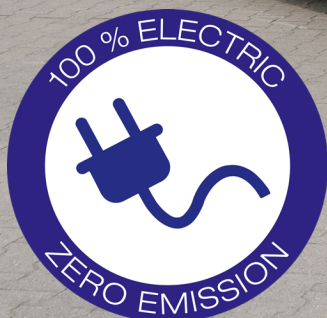
Volkswagen e-Crafter 8-seater

**PremiumPartner**

von Volkswagen Nutzfahrzeuge



Tomorrow's  
**safety** today!



[www.amf-bruns.de](http://www.amf-bruns.de)

# WHEELCHAIR ACCESSIBLE VEHICLE

Volkswagen e-Crafter 8-seater



Wheelchair safely enters the vehicle via the lift.



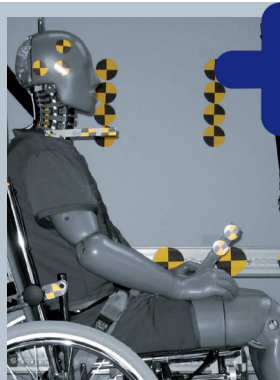
Smartfloor provides flexibility inside your vehicle.



Step and grab handle at the side entry allow easy access to the passenger compartment.

## THESE FACTS MAKE ALL THE DIFFERENCE

- » Flexible & individual planned Smartfloor aluminium floor
- » Quick & flexible configuration of passenger compartment with removable seats
- » Smartseats with original upholstery or artificial leather
- » Fixed step at side entry for easy access to the rear rows of seats
- » PROTEKTOR wheelchair & occupant restraint system (ISO approved)
- » A lift or ramp allows wheelchair users to get safely into the vehicle
- » Linearlift AL1 is a fully automatic lift for the rear door. See-through platform design ensures excellent rear view
- » EMC tested according to EU regulations
- » Possible seat arrangements:  
Linearlift AL1  
 7 passengers + 1 driver  
 alternatively up to 4 wheelchairs  
Euro ramp  
 8 passengers + 1 driver  
 alternatively up to 4 wheelchairs



**Tomorrow's safety today!**

### PROTEKTOR®

Wheelchair & occupant restraint system

The AMF-Bruns Protektor wheelchair & occupant restraint system meets DIN 75078 Teil II, ISO 10542.

### PROSAFE®

„Kraftknotenadapter“  
Integrated lap belt

With the „Kraftknotenadapter“ system the wheelchair is quickly and precisely fitted to the vehicle's floor. It comes with a pelvis belt for the wheelchair occupant.

## TECHNICAL DATA (according to manufacturer)

- » Battery capacity 35,8 kWh
- » Range Up to 173 km
- » Engine power 100 kW max.



**AMF-Bruns GmbH & Co. KG** | Hauptstraße 101 | D-26689 Apen  
 Telefon +49 (0) 44 89 / 72 72 50 | Fax +49 (0) 44 89 / 62 45  
 hubmatik@amf-bruns.de

**www.amf-bruns.de**



DIN EN ISO 3001  
 REG.-NR. 01 0105027